

# **USB Pro 5.1**

**SURROUND SOUND HEADPHONE SYSTEM**

---

# **QUICK INSTALL**

**LTB<sup>TM</sup>**

*The Power of sound*

[www.listentobelieve.com](http://www.listentobelieve.com)

# Quick Install

➤ **OS Support :**

Win98SE, WinME, Win2000, WinXP

➤ **System recommended :**

1. Use Intel Pentium III or AMD K6 500 CPU above
2. At least 64 MB RAM (Win98SE) or 128MB RAM (WinME, Win2000 and WinXP)
3. At least 50 MB hard disk space
4. Support direct sound 3D

**Note:**

Windows OS has default USB driver support, but no support for HRTF 3D, EAX , Multi-channel sound effects and Dolby Digital sound DSP function. Thus, if the user wants to enjoy these enhanced experiences must install the USB Multi Channel sound audio driver.

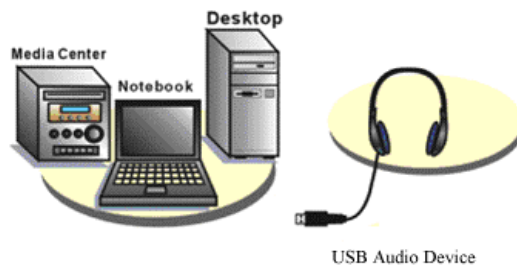
Before the user installs the USB Multi Channel sound audio driver, they must make sure that the USB Multi-media Sound Device has been connected to PC system first.

If your PC system has more than one USB connecting port, please remember which one is connected for install, and the next time when you plug this USB Multi-media Sound Device to the PC, you have to plug into the same port to initialize the USB Multi Channel driver.

## Audio USB Multi Channel Sound Audio Driver Installation Step :

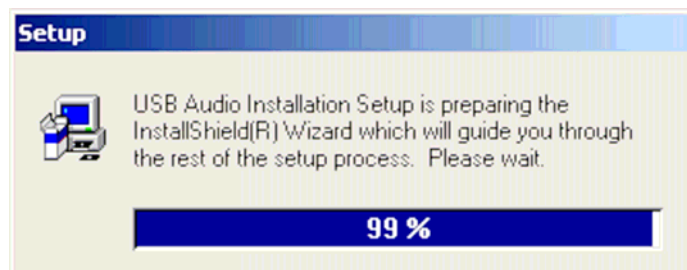
Step 1:

Turn on the PC system and connect USB Multi Channel Sound Device to the PC system.



Step 2:

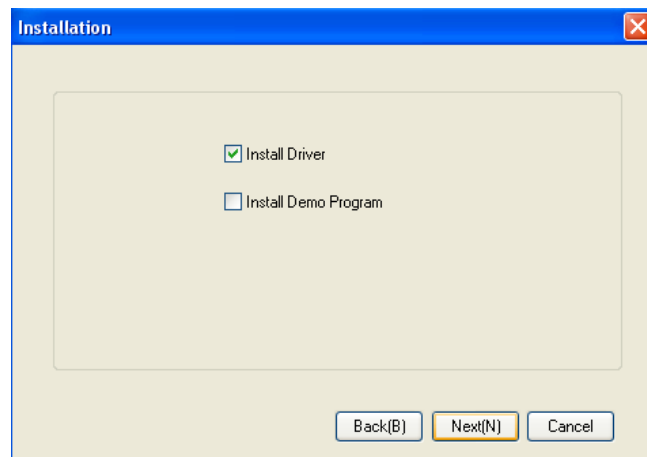
Insert Installation CD in your CD-ROM or DVD ROM, the program will pop up auto run information.



Step 3:  
Please follow up the set up procedure and click "Next" button to continue installation.



Step 4:  
You can Select install driver only click "Next" to continue installation.

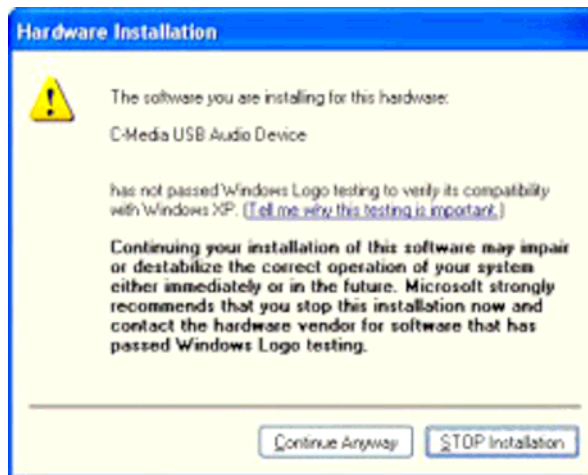


Step 5:  
Set up will install the USB audio kit to default path and folder.



Step 6:

If your System is WinXP, you may see a dialog box asking you about Windows logo issue, please click "Continue Anyway" to complete installation. And set up program will continue install.



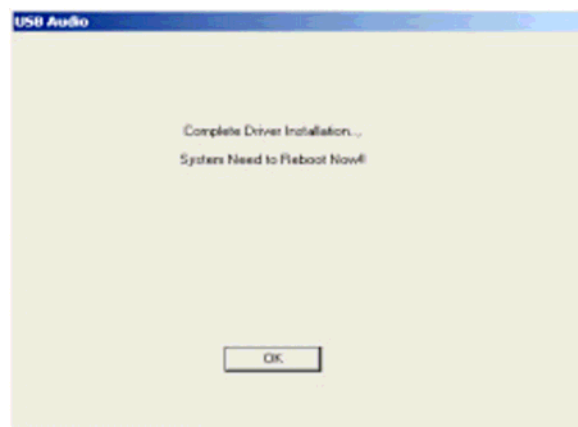
Step 7:

While the program is running to install the drivers it's may take a little time.



Step 8:

When set up program completes installation, the system will need to restart to initialize the driver.



**Step 9:**

After reboot when the system is up and running again, you can see a small icon on right lower tray on the screen. You can click it to open the USB Multi Channel Sound driver functions for control.



**Step 10:**

If your PC system has more than one USB port, you can just plug the USB Personal Multi-media Device to any USB port. If this connection is right that driver will detect the device and show a task bar on the bottom right side of the screen guiding you to the correct port.

Note: If you want to use advance settings, please prefer the CD user manual file.